



Access &  
security  
solutions for  
Education

# Contents

04



## Entrances

Revolving doors, Turnstiles, Barriers, Automatic & Security doors

06



## Electronic Access Control

Access control and Time & Attendance

07



## Mechanical Key Systems

Reversible, Serrated keys and Padlocks

08



## Door Hardware

Fully compliant door closers, Panic hardware, security locks, emergency escape locks

10



## Accommodation

Access & Security

11



## Service & Maintenance



# Ensuring your campus is safe and secure

**dormakaba integrated solutions are widely used by schools, colleges and universities to ensure smart and secure access across the campus and accommodation blocks.**

With a vast product portfolio featuring entrance systems and security doors, door hardware, master key systems, electronic access control and time and attendance management systems, dormakaba ensure the safety and security of staff, students and their belongings whilst protecting the equipment from theft and vandalism. Anti-bullying policies are also supported using an integrated cashless vending solution.

With staff, students and visitors frequently moving around the site it can be difficult to secure external doors. Combined with our design consulting service, dormakaba integrated access and security solutions ensure the provision of ease of access onto and around campus, whilst maintaining security to protect property and students. All dormakaba doors meet the criteria of both Approved Documents and British Standards.

dormakaba's time and attendance systems eradicate the errors and associated costs with manually recording data. The entire system is visible at all times and reports on who has accessed where and when can be accessed at a click of a button. Even providing a roll-call report of who is on site in the event of an emergency.

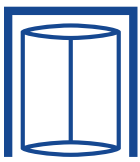
In most cases there is no need for extra keys or cards as the existing student and staff identity cards can be programmed to operate the installed devices.

## **dormakaba offering to Schools, Colleges & Universities**

- Electronic access control & data
- Door hardware
- Access control for accommodation units
- Mechanical key systems
- Electronic locker locks
- Student & Staff attendance recording
- Entrance systems
- External escape doors and swing doors
- Turnstiles and barriers
- Time and attendance terminals
- Manual door closers and furniture
- Glass doors and partitions
- Security doors
- Nationwide, 24 hour repair & maintenance services

# Entrances

## Revolving doors, turnstiles & barriers



### Revolving Doors

Many larger educational establishments wish to create an impressive entrance to their building and a dormakaba revolving door is the perfect way to achieve this.

A revolving door acts as an airlock keeping out draughts, noise, dust and dirt. They can be tailored to your exact requirements, though we would always recommend fitting automatic pass doors to allow for access by those who do not wish to, or cannot, access the revolving door.

### Barriers

dormakaba's Charon HSB: Sensor Barriers are designed for access control and attendance management of staff, students and visitors in the reception area of education facilities. The barrier is sensor-monitored with automatic waist-high swing doors. After

access has been confirmed, the swing doors quickly open in the desired direction making it easy to move through, even with schoolbags and equipment. The doors close automatically as soon as the authorised person has passed through to prevent any unauthorised access. An additional version with a wider opening provides access for people with reduced mobility.

### Turnstiles

dormakaba turnstiles can be installed to protect bicycles against theft and vandalism. The cyclist presents their ID card to the sensor at the bike park entrance, this allows the user to pass through the pedestrian turnstile, simultaneously releasing the locking mechanism on the integrated gate so the bike can also be taken through. The turning speed adjusts individually to each person.



### Kentaur Full-height turnstiles

These sturdy Kentaur turnstiles are especially suitable for reliably securing outdoor areas. When used in conjunction with card readers, they can reliably control access without the need for monitoring by personnel. Thanks to its patented end point locking, it is impossible for anyone to become trapped in the event of power failure or attempted unauthorised access.



### KTV Revolving Door

The KTV revolving door range is designed for installation in entrance areas where interior environmental control coupled with elegant aesthetics are desired. Available as Manual, Automatic, Positional or Servomatic, the KTV range offers flexibility in design and function.



### Argus HSB

The swing doors are similar in design to dormakaba's half-height access units. They complement the access units and are ideal for goods transport or as barrier-free access for wheelchair users. All automatic swing doors can be connected to access control systems.



#### FFT Flex Green

The first folding door that provides for maximum clear opening width of 2.4m in tight spaces. FFT FLEX Green offers outstanding thermal separation, a quiet, dynamic operation and enhanced wind load resistance. It is particularly suitable for emergency exits and escape routes.



#### ST Flex Secure Sliding Door

The ST FLEX Secure sliding door system has been especially designed to provide maximum security. The system offers an unparalleled level of security and meets the increasing demand of facility operators for a solution that combines the convenience of an automatic sliding door with additional anti-intruder and anti-vandalism protection.



#### ED 100 / 250LE Swing Door

Frameless and visually appealing door system used in conjunction with dormakaba's high quality Low Energy operator ED 100/250LE to form a complete entrance. Using slender top and bottom rails with toughened glazing to form an 'all glass' appearance. Used manually by most with assistance on demand via actuation devices.

## Automatic & security doors

### Automatic Doors

Automatic doors are the ideal solution to access into and around a building to meet the spirit of SENDA (Special Education Needs and Disability Act). Approved Document M states "A powered door opening and closing system, either manually controlled or automatically operated by sensors, is the most satisfactory solution for most people."

Automatic doors provide a means of opening and closing doors without the need for physical effort. For many people who lack physical ability or who are encumbered by bags containing text books or sports equipment, heavy manual doors can be a barrier to access. Automatic doors remove that barrier and reduce the maintenance costs associated with corridors and entrances that receive a large footfall.

### Automatic Sliding Doors

The dormakaba ES200 sliding door range is an excellent access solution and ideal in areas with heavy traffic. Tested to 1,000,000 cycles, they can be installed as single slide, bi-parting, telescopic or curved and can be linked to an access control system.

### Automatic Swing Doors

dormakaba ED 100A / ED 250A swing doors are perfect for both new doors or when retro fitted to existing doors. Tested to 1,000,000 cycles and CERTIFIRE tested for use with fire doors, the slimline design is ideal as an entrance solution or room access. The revolutionary "Wind Load Control" function allows unprecedented performance up to 150 Newtons for both opening and closing the door. The ED 100A / ED 250A offers an integrated Energy

Saving Mode function which allows the safety sensors to be switched to standby when not in use to minimise unnecessary power consumption.

### Low Energy Doors

Heavy manual swing doors can be a barrier to access. The dormakaba ED 100LE / ED 250LE offers a range of operating modes which enable the door to be opened under power when required and used as a conventional manual swing door at all other times. There are a range of activation devices including push pads, remote controls or linking the operator to an access control system. The dormakaba ED 100LE / ED 250LE is tested to 1,000,000 cycles and Certifire tested for use with fire doors. The slimline design is ideal for compact rooms including accessible toilets.





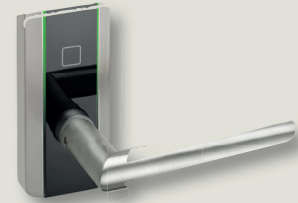
#### Access Reader

The sleek-looking dormakaba readers and registration units will operate any electronic locking solution- such as magnetic and motorised locks, barriers and automatic doors.



#### Digital Cylinder

Key cylinder lock replacements with both visual and acoustic access signals. They are compact, energy efficient and extremely easy to install. The variations available ensures dormakaba can offer a solution for every door.



#### Compact c-lever

Open your doors simply and easily: just present an authorised access medium to the c-lever and a green light appears on the digital light unit – then you open the door with the lever handle. Set your access rights and change them quickly and flexibly whenever you need, operate your system in standalone, remote or online mode.

# Electronic Access Control



### Stand alone access control

Access is gained using a choice of media such as keys, fobs or photo ID cards when fitted with the renowned Legic chip. Being stand alone and easy to install Elolegic is ideally suited to environments where the design and layout does not allow for traditional online systems. Managing the movement of visitors around a site, especially when not being escorted, can be difficult but with an access control solution, sections and rooms can have restricted access. dormakaba Elolegic provides the system manager with a quick and easy way to initiate checks and controls over who has access where and at what times. If instant notification of unauthorised access is required and there is the need to give and remove access rights immediately, whether it is a permanent or temporary change, then dormakaba's online access control systems provide the highest level of flexibility, reporting and security.

### Networked Access Control and Time & Attendance

With students and staff frequently moving around the facility during the day, it is not possible to completely secure the external doors.

dormakaba's Exos 9300 system integrates with TASC and SIMS enabling control and administration of the system from one point and provides complete flexibility on how access to the building is managed.

On-line monitoring means that the status of the entire system is visible at all times giving a full report of activities including who has accessed where and when. Maintaining control of both On-line and Standalone access control doors, Exos 9300 ensures the highest level of security and time recording possible.



# Mechanical Key Systems

## Serrated, reversible keys & padlocks



### Serrated Keys

Any interior quarters such as classrooms, sports halls and IT rooms can be secured utilising dormakaba's Mechanical locking systems.

dormakaba's restricted movement cylinder with key override not only guards against doors being locked from inside the room, but also ensures that authorised key operation from the external side is maintained. Even if the internal thumbturn is held by the occupant in an attempt to prevent access.

pextra is a registered mechanical locking system which offers a cylinder with anti-picking and anti-drilling protection while dormakaba Simplex and E-Plex range offers both mechanical and electronic Push Button Locks respectively.

### Reversible Keys

dormakaba's reversible key systems offer the quality, durability and reliability needed in highly sensitive applications that demand premium security products with industry leading credentials. All our patented and registered

mechanical key systems can be supplied as individual differs or form part of a large and complex master key plan. They are kitemark approved to BS EN 1303 standard.

Having gained a diverse customer base in many stringently operated & legislated industries, dormakaba's key systems are chosen by many security professionals because our locking system and related keys are registered directly with dormakaba.

Therefore, replacement keys and cylinders can only be ordered by authorised personnel. This guarantees that the system owner retains complete control over their locking system and associated keys, maintaining the integrity of the system.

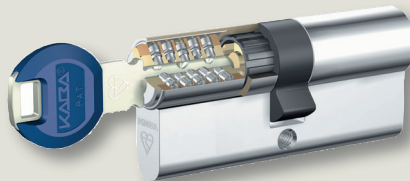
### Padlock and Enclosure locking

dormakaba also offers a range of padlocks to suit a wide variety of applications, providing high levels of physical security combined with market-leading key control procedures. Ideal for perimeter gates, bicycle sheds, maintenance cabinets and more.



#### Pextra Guard

Pextra Guard break secure lock has been developed specifically to meet the TS007 3-Star standard for lock cylinders and has undergone rigorous testing prior to its full approval to the new standard.



#### Expert Plus

dormakaba expert plus key blanks, keys and the system are protected by European patent EP2890356B1 until 2033. The registered figurative mark "Mountain Peak" gives Kaba expert plus high recognition value.



#### Padlocks

dormakaba offers a range of padlocks to suit a wide variety of applications, providing high levels of physical security combined with market-leading key control procedures. Our padlocks are LPCB approved.

# Door Hardware

## Panic hardware, security locks, emergency escape locks



### Panic hardware

Panic hardware fitted to final exit doors has to combine the requirements for safety in allowing egress at any time and yet security, to prevent unauthorised entry into the school or unauthorised egress. Final exit doors are often misused as they can provide a 'shortcut' to the playground or other areas of a school; this can compromise security, especially if they do not lock correctly after use. It is therefore critical that panic devices are capable of self-locking correctly after operation, by using Pullman type latches and a door closer. dormakaba supply and extensive range of touchbars, crossbars, panic bolts and latches.

### Security Locks

dormakaba locks are all CERTIFIRE approved and CE marked to BS EN12209. Their grade 8 classification on the third digit denotes a closing force of below 15N on doors up to 200kg in weight to ensure ease of operation. Independent tests have shown the exact closing force to be 7N, thus ensuring that the door closer will be capable of engaging the latch easily. All lock cases have common dimensions allowing interchangeability of locks should the function of the door change at any time. dormakaba Locks are prepared to take 'bolt through' lever furniture which is considered essential for school projects.

### Emergency Escape Locks

Emergency escape locks provide escape at anytime by the simple operation of the lever handle fitted to the lock. Although they must not be used on final exit doors within a school (panic hardware to BS EN1125 must be used here), they can be used on internal doors to provide extra security, yet allow escape in the event of an emergency. A typical example would be a classroom door. An emergency escape lock can enable a teacher to lock the door to prevent any entry into the classroom yet operation of the lever handle from within the classroom, will unlock the door and allow exit.

**The majority of doors within a school will be fire doors. It is therefore vital that the correct ironmongery is specified: the door closer, the lock, the handle and the intumescent seal. Firstly, let us look at specifying the correct door closer.**

### The Door Closer

There are two main considerations in specifying the correct door controls:

- Does it satisfy the necessary fire regulations?
- Does it satisfy the requirements of the Special Educational Needs & Disability Act (SENDA)?

It is essential that the door closer:

- Is CE marked to BS EN1154
- Is CERTIFIRE approved
- Is set at a minimum spring strength of EN3
- Meets the requirements of SENDA

### BS EN1154 Controlled Door Closing Devices

All dormakaba Door Closers are CE Marked to BS EN1154 and have been cycle tested to over 1 million cycles without showing any appreciable wear. Under BS EN1154 the door closer when fitted to a fire door must be set at minimum spring strength of EN3.

### CERTIFIRE Approved

CERTIFIRE are an independent approvals board for the testing of fire doors and all associated ironmongery. It is worth noting that an approved door will become invalid if approved ironmongery is not fitted. All Door Closers are CERTIFIRE approved.



### SENDA (Special Education Needs & Disability Act)

The requirement of SENDA is that a person is not disadvantaged by their disability in gaining access around a building. The specific performance of door closers in meeting this requirement is detailed within Approved Document M (ADM) in England and Wales / Section 3 in Scotland / Part R in Northern Ireland, of the Building Regulations and BS8300: 2009, Incorporating Amendment No.1. This states: "...a door closer must produce an opening force of below 30N between 0 and 30 degrees and below 22.5N between 30 and 60 degrees...".

On a fire door this must be achieved at minimum spring strength of EN3. Not all door closers available in the market can meet the criteria. All dormakaba door closers carry third party test evidence to demonstrate their ability to comply with the requirements of ADM and BS8300.





#### **TS93 Cam Action Closer**

High-quality architectural solution for all project application requirements, with exceptional ease of opening.



#### **ITS96 Concealed Cam Action Closer**

Hidden within the door leaf and frame for maximum elegance and design aesthetics, coupled with exceptional ease of opening.



#### **TS99 Electromagnetic Free Swing Door Closer**

Ideal for individual room access when used in combination with a fire alarm system.

## Fully compliant door closers

### **Overhead cam action closers**

The traditional type of door closer is known as a rack and pinion closer which must be used with a projecting scissor arm. However dormakaba recommends the selection of cam action door closers instead of these for two reasons:

- Due to their unique cam action they can achieve the requirements of ADM and BS8300\* compliance within a greater tolerance than traditional rack and pinion door closers. This is particularly important as hinges and intumescent seals will provide additional resistance to opening and closing.
- Cam action closers have been especially designed for use with slide arm and channels. Traditional rack and pinion door closers can only operate efficiently with standard projecting scissor arms. The use of slide arms within a school dramatically reduces the risk of vandalism as the arm and channel are far less obtrusive than scissor arms. In addition to this there are no fixings visible on the closer mechanism or the slide channel. This combination of slide arm and channel with cam action

will result in ease of operation by all users, is less vulnerable to abuse and vandalism and will therefore lead to improved life cycle costs.

### **Concealed door closers**

In addition, dormakaba offers a concealed cam action door closer (ITS96) that is concealed in the door leaf and frame. This means it is less prone to vandalism and is also ideal for prestigious doors.

### **Floor Springs**

Floor springs are another alternative to overhead door closers and are suitable for single or double action doors. They provide ease of operation and as they are concealed within the floor - good protection against door closer abuse or vandalism.

### **Transom Closers**

Transom closers are the ideal alternative where floorsprings cannot be used. dormakaba Transom closers provide the performance of dormakaba Floor-springs and are suitable for single and double action doors. They provide ease of operation and as they are concealed within the Transom, good protection against door closer abuse or vandalism.

### **Hold-open and Free swing devices**

When electro-magnetic hold open devices are fitted to doors they dramatically help to improve access in and around any building, particularly in corridors. They allow doors to be held open during normal use and close upon activation of the fire alarm or power failure (fail safe). Once activated, the door closer will close the door and then perform as a normal door closer until the alarm is deactivated or the power restored.

When electro-magnetic free swing devices are fitted to doors they allow doors to be operated without the user feeling any resistance from the door closer mechanism. In addition to this they allow the door to be left in any position, performing as if the door had no closing device fitted. Upon activation of the fire alarm or power failure (fail safe) the free swing device will close the door from any position it was left in, and then perform like a normal door closer until the alarm is deactivated or the power restored.

All the dormakaba electro-magnetic and free swing devices are CERTIFIRE Approved and CE Marked to BS EN1155.



# Accommodation



**Many Schools and Universities have halls of residence to accommodate their students. dormakaba has solutions that will meet requirements of access and security when it comes to education accommodation.**

The dormakaba Ilco E790 lock features a contact-less card reader with RFID technology. This enables the security manager to restrict access to accommodation and faculties to the individual rights of the student. A standard mechanical key override gives security staff additional peace of mind. The E790 also features a full audit trail function that provides traceability of the lock usage. Creating a safer and more secure

environment for students and their belongings. It's easy to install and maintain and has an ergonomic design simplifying access control to save you time and money.

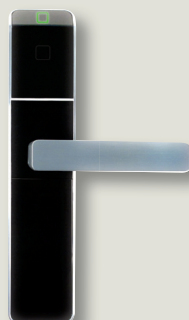
Due to the diversity on offer, the dormakaba c-lever is suitable for doors both inside and outside. Rooms which different user groups or individuals need access rights to can be organised using this standalone solution.

Access rights can be granted at different times, on a permanent or temporary basis. Making it the perfect solution for university accommodation.



## E790

This RFID solution offers keycard auditing capabilities for enhanced staff monitoring & user accountability. The Ilco 790 works with both the dormakaba access management software and portable device.



## Confidant RFID

This ultra-modern lock conveniently functions with dormakaba access management software and stand-alone device. This Bluetooth Low Energy (BLE) capable lock can operate using the dormakaba Mobile Access Solutions, allowing students to use their mobile devices as their room key.



## C-Lever

Proven and well established, the c-lever is timeless in its classical design and user-friendliness. It is compatible with practically all standardised mortice door locks. In most cases, there is no need for a door lock change. This electronic lock can be used on student hall doors as well as classroom doors.

# Service & Maintenance

Tailor-made services and customised maintenance – for the long-term functional integrity of all access and security solutions.



**When you choose dormakaba, you are supported by a nationwide team of local, accredited and fully trained engineers throughout the UK & Ireland, 24 hours a day, seven days a week.**

Our specialised service covers access control systems, lodging products, access & workforce management, security doors, barriers, automatic doors, manual door closers, industrial doors, gates, dock levelers and roller shutters, to offer you a complete solution from front to back of house.

## **Reactive Servicing**

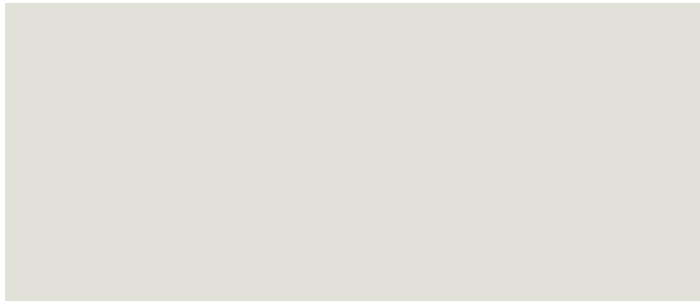
dormakaba provide reactive servicing and maintenance on a non-contracted basis 24 hours a day. Basically, this means that if you have a breakdown or malfunction you can call us in to repair or replace the faulty door even if you don't have a service contract with us.

## **Preventative Servicing**

Our planned or preventative servicing and maintenance is undertaken on a contracted basis.

Regular door maintenance helps prevent accidents, reduces breakdowns and prolongs the life of the operator. An ordinary door failing or not operating correctly is unsafe, or at best annoying, on a fire door it is potentially deadly. dormakaba UK & Ireland operate a mature and comprehensive quality management system that has been consistently certified to BS EN ISO 9001:2015 for many years. Our high standards and commitment to all aspects of Health and Safety are recognised by the achievement of ISO OHSAS 18001:2007 and our commitment to the environment with BS EN ISO 14001:2009.





[www.dormakaba.co.uk](http://www.dormakaba.co.uk)

**dormakaba UK & Ireland**

Lower Moor Way,  
Tiverton, Devon  
EX16 6SS

T: +44 (0)870 000 5625

F: +44 (0)870 000 5397

Wilbury Way, Hitchin,  
Hertfordshire  
SG4 0AB

T: +44 (0)1462 477600

F: +44 (0)1462 477601

E: [info.gb@dormakaba.com](mailto:info.gb@dormakaba.com)